

Interfacing STARGATE-IP to NUVO Audio Systems

INTRODUCTION

This Application Note describes how to interface a NUVO Audio Distribution System (Essentia or Concerto) to Stargate-IP or Stargate-Lite. This application note assumes that the NUVO System has been installed and properly configured.

Support for the NUVO System requires a data cable and adapter and the use of COM2 or COM3 of the Stargate controller. Once configured, the NUVO system is fully integrated into the Stargate and can be controlled through a WinEVM schedule, LCD-96M keypads and the LTS78 touchscreen.

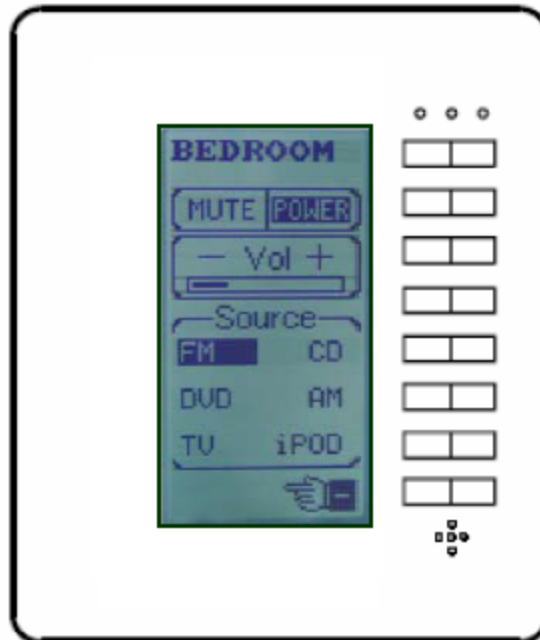
Materials Needed

- NUVO Essentia or Concerto Amplifier
- Data Cable and Adapter (PN: 001-00731)

LCD-96M LCD Keypad Support

LCD Keypads with firmware version 2.1 and higher include support for 12 Audio Zones and 6 Audio Sources. From an Audio screen the Zones source can be selected, as well as control of the Zone's Mute, Power and Volume. Pressing the top left or right button will navigate through all of the defined Audio Zones.

LCD Keypad Audio Control Screen

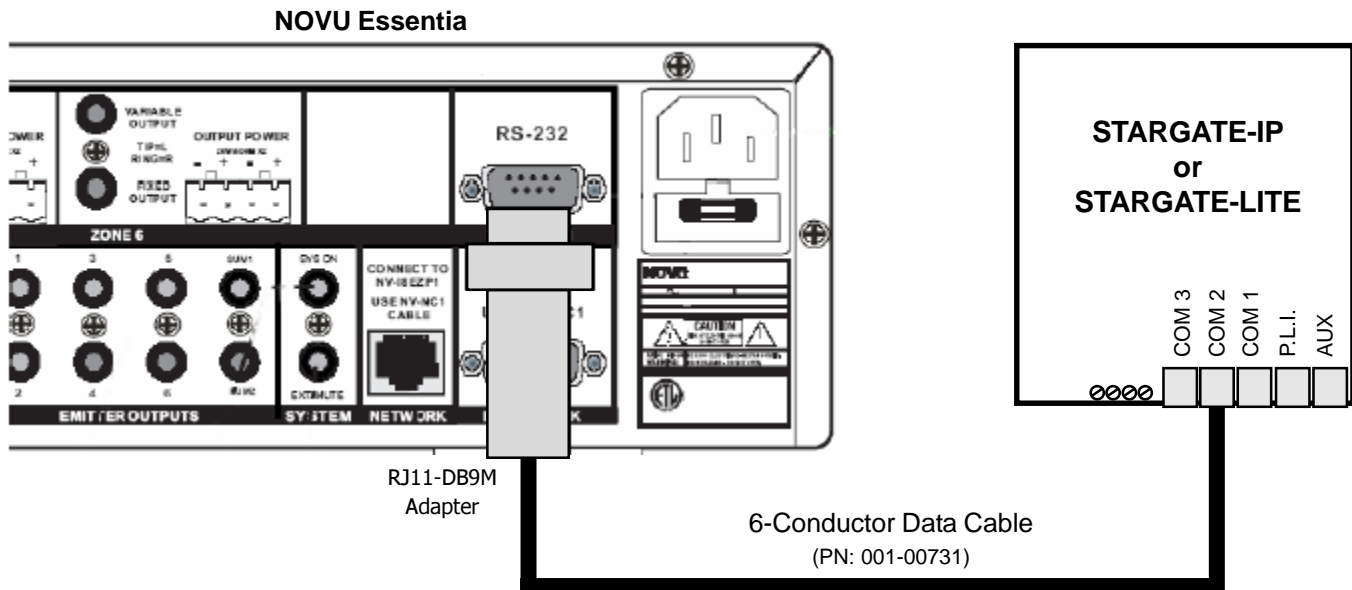


12200 Thatcher Court, Poway, CA 92064 U.S.A.
TEL 858-486-8787 FAX 858-486-8789
www.jdstechologies.com

IMPLEMENTATION

HARDWARE

- 1) Setup and configure your NUVO system.
- 2) Connect the 6-Conductor Data Cable and RJ11-DB9M adapter to the NUVO's RS232 port.
- 3) Connect the other end of the 6-conductor Data Cable into COM2 or COM3 of Stargate.



SOFTWARE

- 1) Configure Stargate to communicate with the NUVO: Select **Define – Audio System**.

Set the following Audio System parameters:

Audio System: Select Nuvo

Serial Port Used: The physical COM port Stargate uses to communicate to the Nuvo.

Zones: These are your Audio Zones.

Sources: These are your Audio Sources. They have been limited to 4 characters to fit the LCD Keypad.

- 2) Press OK, WinEVM will download the information to Stargate (if connected).

TROUBLESHOOTING

If the NUVO System does not respond to commands sent by Stargate verify the following:

- Serial Port configuration is valid for “Nuvo” and 9800: N81
- All Cables/Connections are still intact
- Run Stargate’s Self-Test to test COM2/COM3 functionality. After the Self-Test you will need to re-download your schedule.

Controlling the NUVO System in WinEVM

WinEVM version 4.0.0, and later revisions, has built in support for controlling the NUVO system through a series of THEN actions that can be used in a schedule.

The following Audio system commands can be used anywhere in your schedule:

Select Zone: Select the Zone you wish to control.

Audio Commands:

ZONE Power ON - This command turns ON Power to selected Zone.

ZONE Power OFF - This command turns OFF Power to selected Zone.

Set ZONE Volume - This command sets the Zone's Volume to the "Volume" level. Volume range is 0-70 to match Nuvo.

Set ZONE Source - This command sets the Zone's Source.

ZONE Mute ON - This command MUTES the selected Zone.

ZONE Mute OFF - This command UN-MUTES the selected Zone.

SYSTEM Power OFF - This command turns Power-Off to ALL Zones.

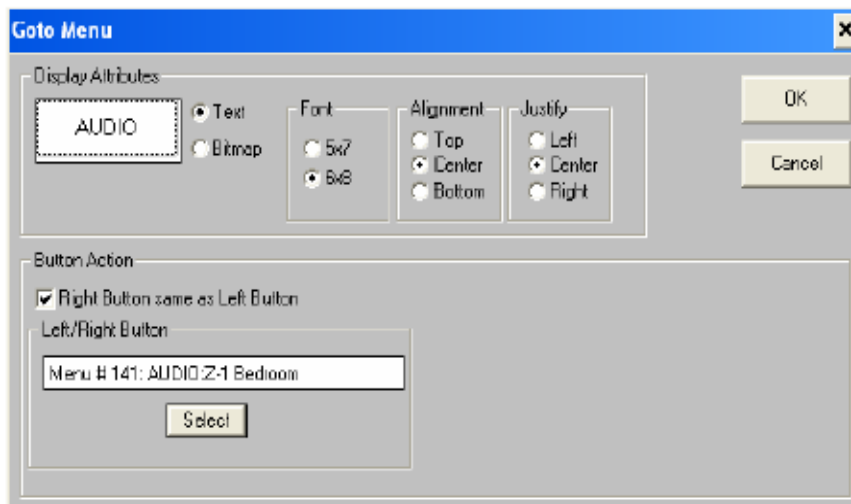
SYSTEM Mute ON - This command MUTES ALL Zones.

SYSTEM Mute OFF - This command UN-MUTES ALL Zones.

Controlling the NUVO System with a LCD-96M Keypad

To display an Audio screen on the LCD-96M keypad, you must first define a "Goto Menu" button, then choose which Audio Zone to display when then that button is pressed. Any of the 12 Audio zones can be chosen.

You can also use an Audio screen as the default timeout screen either in the Keypad Setup screen or by selecting the Menu number in the setup screen of the Keypad itself.



REFERENCES

NuVo Technologies

4940 Delhi Pike

Cincinnati, Ohio 45238 USA

Phone: 513-347-2180

Fax: 513.347.8555 or 866.889.1026

e-mail: TechSupport@nuvotechnologies.com

internet: www.nuvotechnologies.com/